

WATER COOLED WATER CHILLERS AND HEAT PUMPS

MCW-C / MCW-H / MCR



55 models cooling only and heat pumps, standard and low noise version

Cooling capacity from 5 to 39 kW

Heating capacity from 6 to 42 kW

MCW-CS water cooled chiller, standard version

MCW-CL water cooled chiller, low noise version

MCW-HS water cooled heat pump, standard version

MCW-HL water cooled heat pump, low noise version

MCR standard and low noise moto-evaporating versions

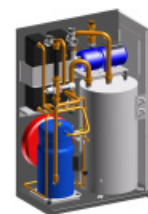
Reduced overall dimensions in a completely closed frame for very reduced noise levels

Integrated hydraulic kit available on all the range

Hydraulic and refrigerant connections to the top of the unit

Microprocessor control with connection to different BMS

Available options: electronic expansion valve, partial heat recovery system, condensing pressure control, antifreeze kit, GSM modem provided with antenna



RATED TECHNICAL DATA

MCW		055	070	100	120	150	180
Cooling capacity	kW	5,5	7,0	9,9	12,2	14,9	17,8
Heating capacity	kW	5,9	7,6	10,6	13,1	16,0	19,2
Rated power input	kW	1,3	1,7	2,3	2,75	3,4	3,95
Nr. of compressors/circuits		1 / 1	1 / 1	1 / 1	1 / 1	1 / 1	1 / 1
Evaporator water pressure drop	kPa	27	31	27	31	27	30
Condenser water pressure drop	kPa	12	15	12	15	19	22
Available ppump head (option)	kPa	82	70	61	122	115	98
Buffer tank	liters	47	47	47	92	92	92
Standard unit sound pressure	dB A	62	62	62	62	64	64
Low-noise units suond pressure	dB A	60	60	60	60	62	62
Heigth H	mm	800	800	800	1240	1240	1240
Lenght L	mm	705	705	705	812	812	812
Width P	mm	453	453	453	508	508	508

MCW		205	220	270	310	390
Cooling capacity	kW	20,1	21,9	26,9	31,2	38,7
Heating capacity	kW	21,6	23,6	29,0	33,6	41,7
Rated power input	kW	4,4	4,9	6,3	7,2	8,9
Nr. of compressors/circuits		1 / 1	1 / 1	1 / 1	1 / 1	1 / 1
Evaporator water pressure drop	kPa	26	29	26	29	28
Condenser water pressure drop	kPa	20	24	21	20	22
Available ppump head (option)	kPa	134	121	105	100	149
Buffer tank	liters	92	92	92	92	92
Standard unit sound pressure	dB A	64	64	64	64	64
Low-noise units suond pressure	dB A	62	62	62	62	62
Heigth H	mm	1240	1240	1240	1240	1240
Lenght L	mm	812	812	812	812	812
Width P	mm	508	508	508	508	508

Cooling capacity: evaporator water temp. 12 / 7°C - water temp. to the condenser 15°C
 Heating capacity: condenser water temp. 40 / 45°C - water temp. to the evaporator 15°C
 Sound pressure level: given in free field conditions, 10 m distance, directional factor 2

