

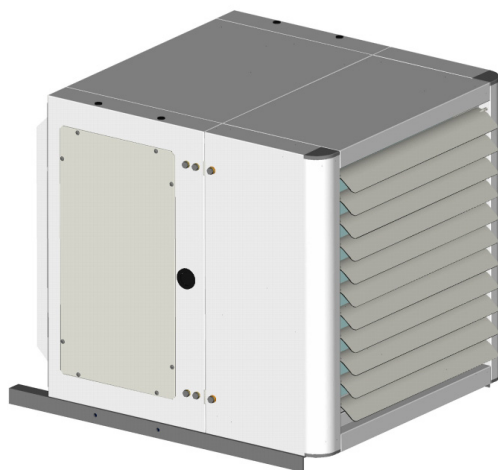
AREO

PAE PRESA ARIA ESTERNA

I

PAE EXTERNAL AIR INTAKE

GB



CE

COMPANY
WITH QUALITY SYSTEM
CERTIFIED BY DNV
== ISO 9002 ==

I

PAE PRESA ARIA ESTERNA

- a) Montare la presa aria con gli angolari di sostegno
- b) Fissare a parete gli angolari con la presa aria
- c) Fissare l'aerotermo alla presa aria

DIMENSIONI

Accessorio	Versione	Bocca Aspirazione	Foro parete esterna
AYPAE1	AREO 12-13-14	392x392	400x400
AYPAE2	AREO 22-23-24	492x492	500x500
AYPAE3	AREO 32-33-34	592x592	600x600
AYPAE4	AREO 42-43-44	692x692	700x700
AYPAE5	AREO 52-53-54	792x792	800x800
AYPAE6	AREO 62-63-64	892x892	900x900

GB

PAE EXTERNAL AIR INTAKE

- a) To assemble the air intake use the L-shaped supports
- b) Fix the L-shaped supports to the wall along with the air intake
- c) Fix the fan heater to the air intake

DIMENSIONS

Accessory	Model	Air inlet	External wall hole
AYPAE1	AREO 12-13-14	392x392	400x400
AYPAE2	AREO 22-23-24	492x492	500x500
AYPAE3	AREO 32-33-34	592x592	600x600
AYPAE4	AREO 42-43-44	692x692	700x700
AYPAE5	AREO 52-53-54	792x792	800x800
AYPAE6	AREO 62-63-64	892x892	900x900

